

INDUSTRIAL/WAREHOUSE
FOR LEASE

Banfield Industrial Park

5636 NE Hassalo St, Portland OR 97213
Building B



Key Features



10,405 sq. ft. shell



1,744 sq. ft. office



2 dock doors
1 grade door

16' clear height

3,412 sq. ft. fenced yard

End cap space

Light rail within one block

Convenient access to I-84,
I-405, and I-205

Available January 2025

Lease Rate (NNN):

\$0.90/sq. ft. shell

\$1.20/sq. ft. office

Jake Bigby

jakeb@pactrust.com

Caitlin Knecht

caitlink@pactrust.com

503.624.6300

Owned & Managed by

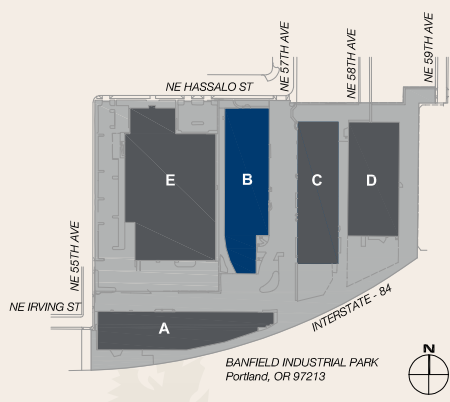
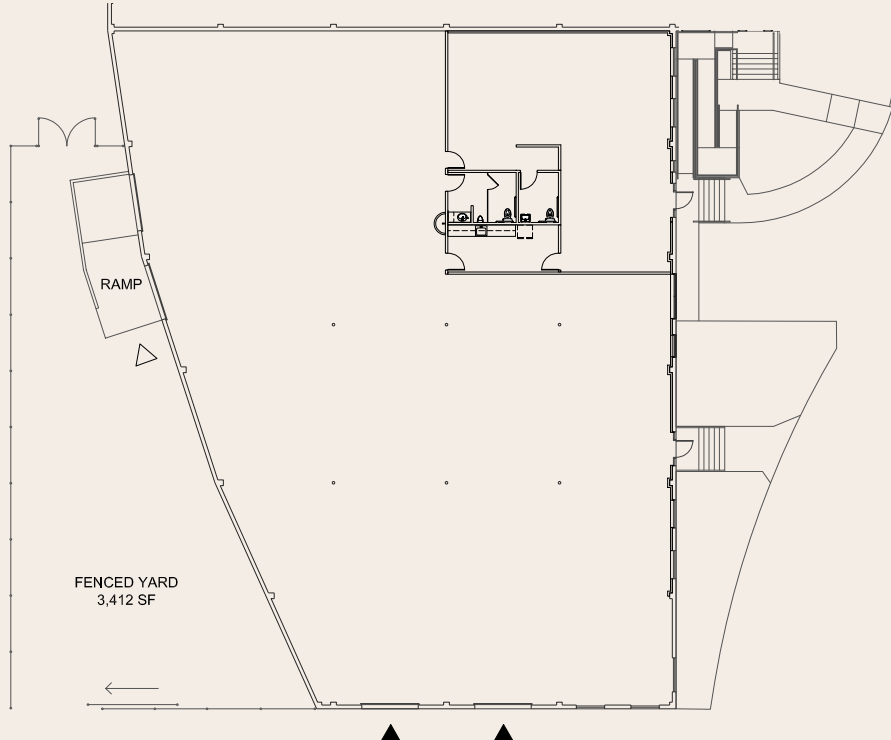
PACTRUST

© 2024 PacTrust. All information supplied herein, including but not limited to measurements, dimensions, and specifications, is deemed reliable but is not guaranteed and should be independently verified. Any reliance on the information contained herein is at the user's own risk.

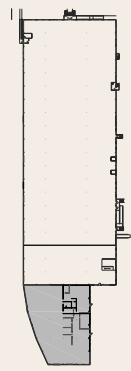
Space Plan

5636 NE Hassalo St, Portland OR 97213

10,405 Sq. Ft.



▽ GRADE ACCESS
▼ DOCK ACCESS



BUILDING PLAN

Jake Bigby
jakeb@pactrust.com

Caitlin Knecht
caitlink@pactrust.com

503.624.6300
www.PacTrust.com